



RETAIL PRODUCT CATALOGUE AUSTRALIA

valid from 01.09.2015








System Products

German technology, proven in Australia



Prices in AUD and exclude GST. Prices valid from 01.09.2015.

All previous price lists are invalid. Non-binding offer. Terms and conditions apply.
Errors excepted. For volume discounts please refer to your pro clima discount structure.

	Page
 Weathertightness	
SOLITEX EXTASANA®	5
SOLITEX MENTO® 1000	7
SOLITEX MENTO® 3000	7
SOLITEX MENTO® PLUS	7
SOLITEX® UM connect	8
 Airtightness	
INTELLO®	10
INTELLO® PLUS	10
INTELLO® PLUS connection strip	11
 Fixing components	
ORCON® CLASSIC	12
TESCON EXTORA®	13
TESCON EXTORA® PROFIL	13
TESCON EXTOSEAL®	14
CONTEGA® IQ Timber	15
CONTEGA® IQ Masonry	15
TESCON® NAIDEC	15
TESCON® VANA	16
TESCON® PROFIL	16
DUPLEX	16
INSTAABOX	17
KAFLEX MONO/DUO	18
KAFLEX MULTI	18
KAFLEX post	18
ROFLEX 50/100/150/200/250/300	19
ROFLEX 20	19
 Quality control	
Blower Door	20
WINCON	21
WINCON Transport box	21
WINCON Tape	21
Draeger smoke stick kit	21
 Service	
New Zealand STUDY	22
INTELLO® brochure	23
SOLITEX EXTASANA® brochure	23
SOLITEX MENTO® brochure	23
BRANZ Appraisal No. 815 (TESCON EXTOSEAL®)	23
BRANZ Appraisal No. 838 (TESCON EXTORA®)	23
BRANZ Appraisal No. 855 (SOLITEX MENTO® 3000)	23
BRANZ Appraisal No. 822 (SOLITEX EXTASANA®)	23
pro clima contact details	24

The optimum weathertightness protection with pro clima



SOLITEX EXTASANA®

The extremely high diffusion permeability due to the active diffusion function and the high water resistance of the pro clima SOLITEX EXTASANA under all climatic conditions, offers the ultimate weathertightness solution during construction and for the lifetime of the building. The pro clima SOLITEX EXTASANA offers the optimum protection against the leaky building syndrome.

- ✓ Can be used as an Air Barrier
- ✓ High resistance to driving rain
- ✓ High tear resistance
- ✓ Highly diffusion permeable
- ✓ High resistance to UV ageing
- ✓ Quiet in windy conditions
- ✓ New generation wall sarking
- ✓ Optimum weathertightness system



KAFLEX mono/duo
Sealing grommets for cables



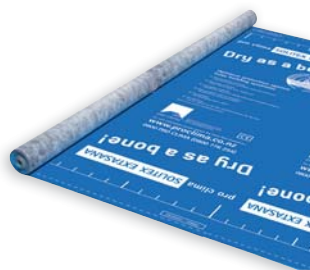
ROFLEX
Sealing grommets for pipes

ORCON® CLASSIC
Multi-purpose liquid adhesive





ROOF AND WALL UNDERLAYS – External Membranes



SOLITEX EXTASANA® Wall protection membrane

APPLICATION: SOLITEX EXTASANA is designed to be used behind most typical cladding systems, provided it is not exposed to the weather or ultra-violet light for a period greater than 90 days.

ID CODE	GTIN	LENGTH	WIDTH	AREA	KG/PU	PU	PU/PAL	\$/m ²	\$/UNIT
13323	4026639133236	36.5 m	2.74 m	100 m ²	16	1	20	3.90	310.00
13547	4026639135476	36.5 m	1.50 m	55 m ²	8.5	1	20	3.90	170.50

ADVANTAGES:

High performance monolithic nonporous membrane; high water resistance; low vapour resistance; unaffected by wood preservatives; thermostability above 100 °C; can be exposed to the Australian elements for 90 days

SYSTEM PRODUCTS:

TESCON EXTORA; TESCON EXTSEAL;
ORCON CLASSIC; KAFLEX; ROFLEX;
CONTEGA IQ

TECHNICAL DATA:

Cover-fleece + protective-layer:	PP microfibre fleeces
Membrane:	monolithic TEEE film
MVTR-value:	< 0.75 MNs/g
Thickness :	0.60mm ± 0.05mm
Temperature resistance:	-40 °C to +100 °C
UV stability and outdoor exposure:	90 days
Water column:	10,000
Surface weight	140 g/m ² ± 5g/m ²

CodeMark: a certification scheme for building products



Product certification (CodeMark) is a voluntary scheme that provides an easily understood and robust way to show that a building product or system is code compliant.

A CodeMark-certified product or construction method must be accepted by any building consent authority as complying with the Building Code, as long as it is used as specified.

Application

Roll out and fix membrane



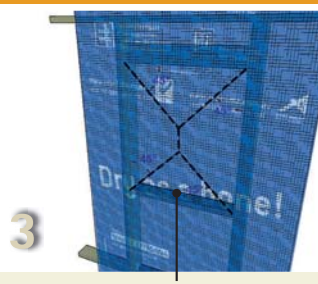
Fix securely to the frame at 300 mm centres horizontally and vertically.

Vertical overlaps



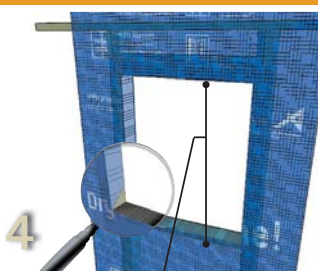
Minimum of 150 mm is required at vertical overlaps.

Cut membrane at opening



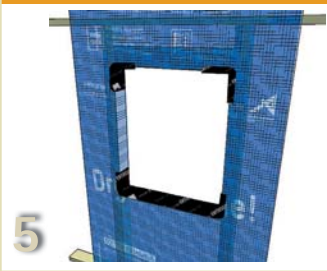
SOLITEX EXTASANA to be cut at 45° to corners of openings.

Fold membrane into opening



SOLITEX EXTASANA to be folded into opening and secured to framing.

Seal membrane at opening



Apply TESCON EXTSEAL sill tape to wall openings as per NZBC Acceptable Solution E2/AS1 paragraph 9.1.5.b.

Seal membrane to window joinery



Apply TESCON EXTORA weathertight sealing tape to window joinery.

Sealing penetrations



Use pro clima ROFLEX to seal pipe penetrations and pro clima KAFLEX for cable penetrations.

Connecting to rough or mineral surfaces

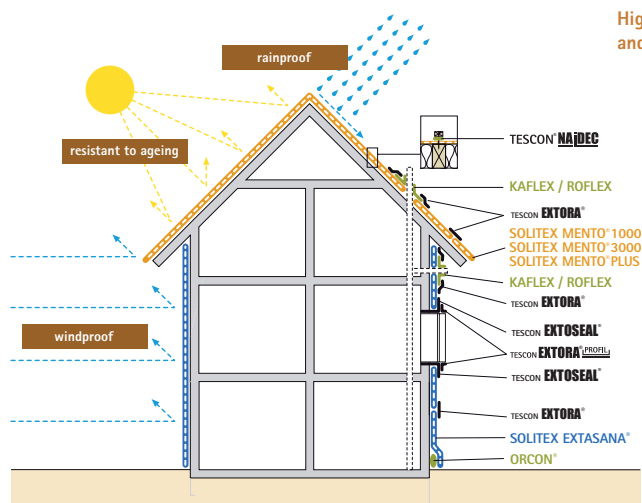


Use pro clima ORCON CLASSIC to adhere the SOLITEX EXTASANA to rough adjoining structural components or mineral surfaces.

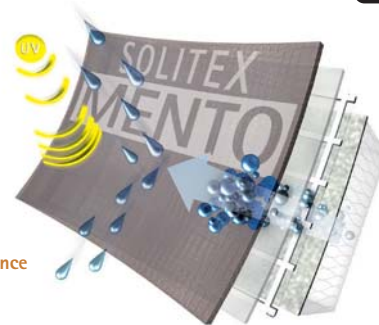
Weathertightness with pro clima

SOLITEX®

High-performance roof and wall sarking



High UV resistance, durability and thermostability

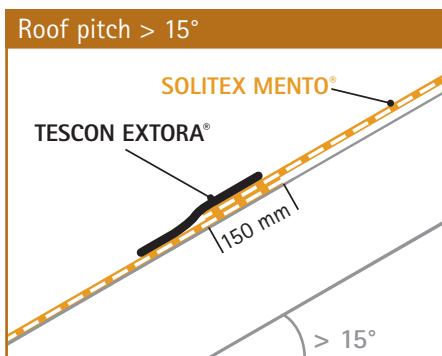


High water resistance

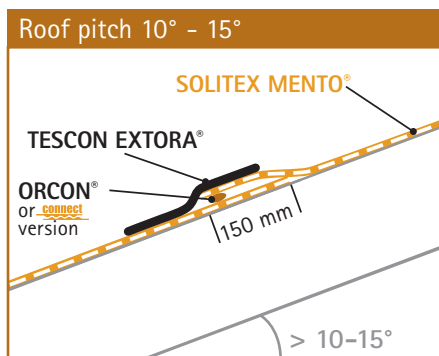
Low vapour resistance

Best protection through high performance monolithic nonporous membranes

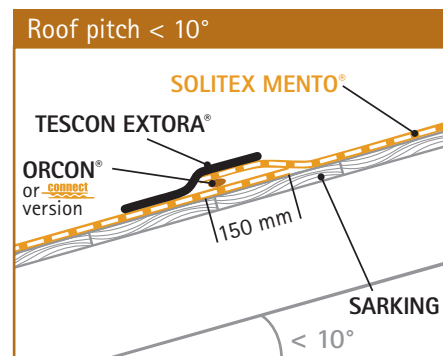
- ✓ **High water resistance** - Three layer nonporous diffusion-open polypropylene membrane
- ✓ **High UV resistance** - Up to 90 days exposure in Australia
- ✓ **Low vapour resistance** - TEEE film for active moisture transport from the inside to the outside
- ✓ **High thermostability** - Melting point of the membrane is 200 °C
- ✓ **High durability under all conditions** - Membrane as used for vehicle airbags
- ✓ **High rip and nail tear resistance** - Durable in high wind zones



Fix to all framing members with 20 mm largehead flat head clouts, 8 - 12 mm stainless steel staples or proprietary underlay fixings. The fixings should be at 100 mm - 150 mm centres.



The membrane must be pulled taut over the framing before fixing.



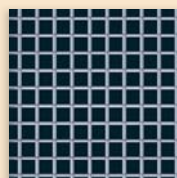
Any laps must be no less than 150 mm. (Please contact pro clima if the roof pitch is < 5°.)



Cover fleece

The robust polypropylene microfibre cover fleece is water - resistant and provides optimum protection against water penetration. It protects the specialist TEEE-film underneath from damage and UV radiation.

The honeycomb structure provides non-slip properties even when wet. It is coloured blue to prevent dazzling effect when it is installed.



Reinforcement material

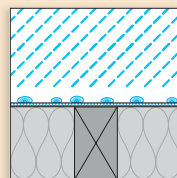
The tightly meshed PP reinforcement material doubles the overall strength of the SOLITEX MENTO PLUS membrane. The material is highly effective at preventing the membrane being penetrated through accidental treading or nail tearing.



TEEE-film open, specialist

A stretchable, diffusion-open specialist TEEE-film gives the pro clima SOLITEX membranes extremely high resistance to water penetration. At the same time, it allows the water vapour from the inside to pass almost unrestricted towards the outside.

In addition, the specific properties of the specialist TEEE-film ensure the excellent wind resistance properties of the pro clima SOLITEX membranes.



No tent effect

The fact that the pro clima SOLITEX membranes are multi-layered prevents the tent effect (tent canvases leak at points of contact). The pro clima SOLITEX membranes can be supported across the whole surface.

For more detailed technical information please refer to the pro clima New Zealand Study.

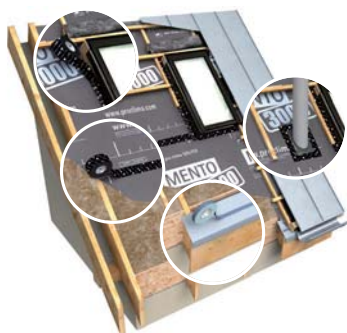
Prices in AUD and exclude GST. Price valid from 01.09.2015. All previous price lists are invalid. Non-binding offer. Terms and conditions apply. Errors excepted. For volume discounts please refer to your pro clima discount structure.



ROOF AND WALL SARKING – External Membranes

SOLITEX MENTO® FAMILY Three and four layer roof sarking

APPLICATION: SOLITEX MENTO is designed to be used with most typical roof cladding systems, provided it is not exposed to the weather or ultra-violet light for a period greater than 90 days (30 days for SOLITEX MENTO).



SOLITEX MENTO® 1000
Three layer roof sarking
light sheeting with monolithic TEEE functional membrane



SOLITEX MENTO® 3000
Three layer roof sarking
very high wear-resistance, high resistance to driving rain, very high thermal stability

Also available: connect -technology with two integrated self-adhesive zones



SOLITEX MENTO® PLUS
Four layer reinforced roof sarking
for blowing-in insulation



11
EN 13859-1

ARTICLE	ID CODE	GTIN	LENGTH	WIDTH	AREA	KG/PU	PU	PU/PAL	\$/m²	\$/UNIT
SOLITEX MENTO 1000	15048	4026639150486	50 m	1.50 m	75 m²	9	1	30	3.16	237.00
SOLITEX MENTO 3000	13648	4026639136480	50 m	1.50 m	75 m²	11	1	20	3.96	297.00
SOLITEX MENTO 3000	15390	4026639153906	50 m	3.00 m	150 m²	22	1	20	3.96	594.00
SOLITEX MENTO 3000 connect	15391	4026639153913	50 m	1.50 m	75 m²	11	1	20	4.60	345.00
SOLITEX MENTO PLUS	13334	4026639133342	50 m	1.50 m	75 m²	13	1	20	4.60	345.00
SOLITEX MENTO PLUS	15393	4026639153937	50 m	3.00 m	150 m²	26	1	20	4.60	690.00
SOLITEX MENTO PLUS connect	15392	4026639153920	50 m	1.50 m	75 m²	13	1	20	5.20	390.00

Advantages:

High wear-resistance microfibre fleece; very high resistance to driving rain; very high thermal stability; suitable for use as temporary roof covering as recommended by pro clima

Technical data:

	MENTO 1000	MENTO 3000	MENTO PLUS
Cover-fleece + protective-layer:	PP microfibre fleeces		
Membrane:	monolithic TEEE film		
Reinforcement:	-		PP
Attribute			
Colour:	anthracite	anthracite	anthracite
Surface weight:	115 ±5 g/m²	150 ±5 g/m²	175 ±5 g/m²
Temperature resistance:	-40 °C to +100 °C	-40 °C to +120 °C	-40 °C to +100 °C
MVTR-value:	very low	very low	very low
Thickness:	0.40 ±0.05 mm	0.45 ±0.05 mm	0.60 ±0.10 mm
Tensile strength MD/CD: (based on EN 12311-1)	220 ±15 N/5 cm / 185 ±15 N/5 cm	300 ±20 N/5 cm / 220 ±20 N/5 cm	500 ±30 N/5 cm / 330 ±30 N/5 cm
UV exposure:	30 days	90 days	90 days
Shrinkage:	pass	pass	pass
Flammability Index:	1	1	1

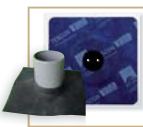
pro clima system products:



TESCON EXTORA®
Multi-purpose adhesive tape for windproof and weathertight sealing of roof underlays, wall underlays and other weathertightness layers



ORCON® CLASSIC
Multi-purpose joint adhesive in cartridge or tubular film. For joints to adjacent mineral or rough structural components



ROFLEX / KAFLEX
Sealing grommets for cables and pipes that penetrate through the SOLITEX membrane layer



TESCON® NAIDEC
Double sided butyl rubber tape. Weathertight nail sealing tape for the underside of a purlin / batten on roofs to form a durable seal around nail or screw penetrations.



SOLITEX® UM

Four-layer underlay with 3D separation layer and self-adhesive strip

APPLICATION: SOLITEX UM connect is suitable for ventilated or unventilated structures in combination with any type of roofing or façade materials such as titanium zinc, aluminium, stainless steel, galvanised steel, copper etc.

ID CODE	GTIN	LENGTH	WIDTH	AREA	KG/PU	PU	PU/PAL	\$/m ²	\$/UNIT
13598	4026639135988	25 m	1.50 m	37.5 m ²	19	1	10	17.20	602.00

ADVANTAGES:

Optimum safety for the roof; highly diffusion-permeable but with maximum resistance to driving rain; 3D separation layer provides increased acoustic insulation and ventilation between timber sarking and the metal cladding; very high thermal stability; integrated self-adhesive strip

SYSTEM PRODUCTS:

TESCON EXTORA; DUPLEX; ORCON CLASSIC; KAFLEX; ROFLEX; TESCON NAIDEC; TESCON EXTOSEAL; CONTEGA IQ

TECHNICAL DATA:

Cover-fleece + protective-layer:	PP microfibre fleeces
Membrane:	monolithic TEEE film
Thickness:	8.0 ±0.5 mm
MVTR-value:	0.30 ±0.10 MNs/g humidity variable
Surface weight:	450 ±10 g/m ²
Temperature resistance:	-40 °C to +100 °C
Tensile strength MD/CD:	285 ±15 N/5 cm / 215 ±15 N/5 cm



Airtightness with pro clima

INTELLO®

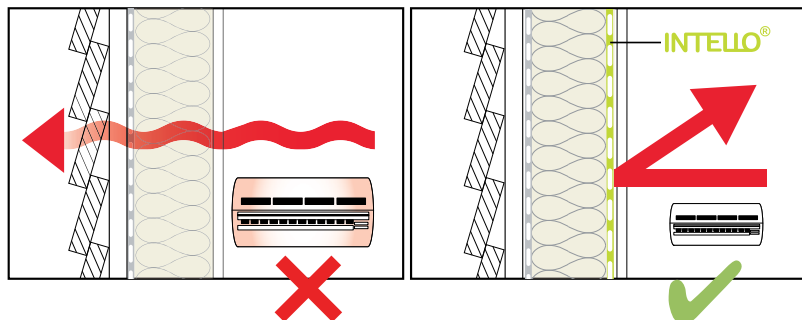


High-performance vapour check

- ✓ the essential element to ensure thermal insulation is perfect
- ✓ resulting in warmer, drier, healthier homes – all year round

Benefits of Airtightness

Energy retention



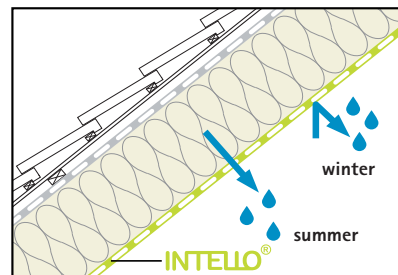
ENERGY EFFICIENCY

- ✓ Reduced air infiltration saves energy and therefore fewer heating / cooling appliances are needed
- ✓ Keeps your home warm in winter and cool in summer
- ✓ Solution to reduce Australia's overall energy dependence through greater energy efficiency

FREEDOM FROM STRUCTURAL DAMAGE

- ✓ Prevents moisture build up in the construction
- ✓ High drying capacity through the intelligent INTELLO® membrane
- ✓ In-situ installation verification through WINCON test

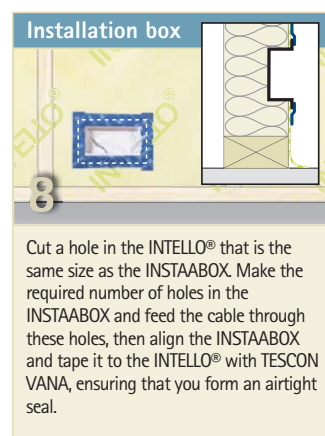
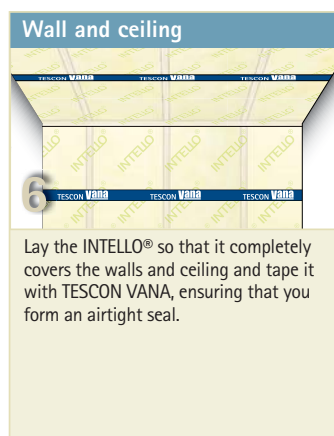
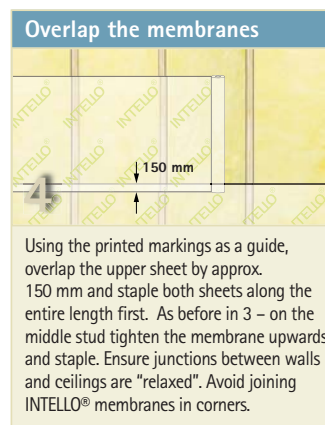
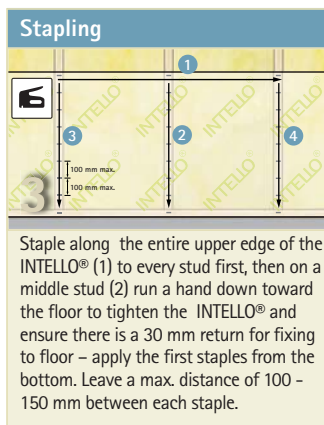
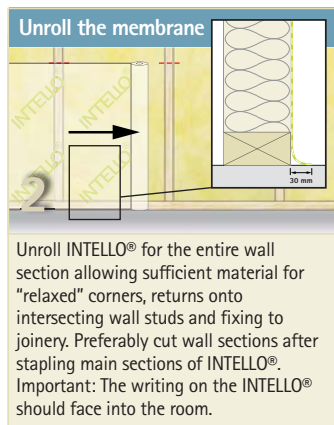
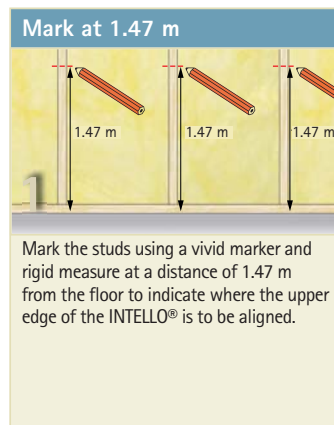
Moisture control in summer and winter



HEALTHY INDOOR AIR

- ✓ Eliminates contamination of the indoor air
- ✓ Prevents mould and mildew in the construction from internally driven moisture
- ✓ Enables controlled ventilation

Application





INTELLO® High-performance vapour check

APPLICATION: Can be used as a vapour check and airtightness membrane for all externally diffusion-open constructions.

ID CODE	GTIN	LENGTH	WIDTH	AREA	KG/PU	PU	PU/PAL	\$/m²	\$/UNIT
15467	4026639154675	20 m	1.50 m	30 m²	3.5	1	42	6.00	180.00
13592	4026639135926	50 m	1.50 m	75 m²	7	1	20	5.40	405.00
13594	4026639135940	50 m	3.00 m	150 m²	14	1	20	5.40	810.00

ADVANTAGES:

Maximum protection for your construction; Optimum prevention against structural damage and mould, even in the event of unexpected moisture intrusion; extremely high humidity-variable diffusion resistance; MVTR-value > 125 MNs/g in a winter climate; MVTR-value = 1.25 MNs/g back-diffusion capacity in summer

SYSTEM PRODUCTS:

TESCON VANA; TESCON PROFIL; ORCON CLASSIC; INTELLO PLUS connection strip; KAFLEX; ROFLEX; INSTAABOX; DUPLEX; CONTEGA IQ

TECHNICAL DATA:

Fleece:	PP microfibre fleeces
Membrane:	polyethylene copolymer
Thickness:	0.20 ±0.05 mm
MVTR-value mGTIN/humidity variable:	40 / 1.25 > 125 MNs/g
Surface weight:	85 ±5 g/m²
Temperature resistance:	-40 °C to +80 °C
Tensile strength MD/CD:	130 N/5 cm / 105 N/5 cm

CE certification as per DIN EN 13984.



INTELLO® PLUS High-performance reinforced vapour check

APPLICATION: Can be used as a vapour check and airtightness membrane for all externally diffusion-open constructions.

ID CODE	GTIN	LENGTH	WIDTH	AREA	KG/PU	PU	PU/PAL	\$/m²	\$/UNIT
15468	4026639154682	20 m	1.50 m	30 m²	4	1	42	6.50	195.00
11367	4026639113672	50 m	1.50 m	75 m²	9	1	20	5.80	435.00
13590	4026639135902	50 m	3.00 m	150 m²	18	1	20	5.80	870.00

ADVANTAGES:

Maximum protection for the insulation; Optimum prevention against structural damage and mould, even in the event of unexpected moisture intrusion; extremely high humidity-variable diffusion resistance; MVTR-value > 125 MNs/g in a winter climate; MVTR-value = 1.25 MNs/g back-diffusion capacity in summer

SYSTEM PRODUCTS:

TESCON VANA; TESCON PROFIL; ORCON CLASSIC; INTELLO PLUS connection strip; KAFLEX; ROFLEX; INSTAABOX; DUPLEX; CONTEGA IQ

TECHNICAL DATA:

Fleece:	PP microfibre fleeces
Membrane:	polyethylene copolymer
Reinforcement:	PP
Thickness:	0.20 ±0.05 mm
MVTR-value mGTIN/humidity variable:	40 MNs/g / 1.25 > 125 MNs/g
Surface weight:	110 ±5 g/m²
Temperature resistance:	-40 °C to +80 °C
Tensile strength MD/CD:	350 N/5 cm / 290 N/5 cm

CE certification as per DIN EN 13984.

pro clima system products:



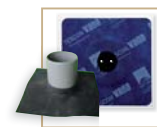
TESCON® VANA
Multi-purpose adhesive tape for sealing membrane overlaps



ORCON® CLASSIC
Multi-purpose joint adhesive in cartridge or tubular film. For joints to adjacent mineral or rough structural components



INSTAABOX
This box allows for airtight installation of light switches and power plugs for wall systems without service cavity



ROFLEX / KAFLEX
Sealing grommets for cables and pipes that penetrate through the INTELLO membrane layer



INTELLO[®] PLUS connection strip

High-performance reinforced vapour check connection strip for ease of installation

APPLICATION: The connection strip is designed to connect the airtightness membranes at junctions between internal walls and external walls / ceiling.



ADVANTAGES:

Maximum protection for the insulation;
Optimum prevention against structural damage and mould, even in the event of unexpected moisture intrusion; extremely high humidity-variable diffusion resistance; MVTR-value > 125 MNs/g in a winter climate; MVTR-value = 1.25 MNs/g back-diffusion capacity in summer

SYSTEM PRODUCTS:

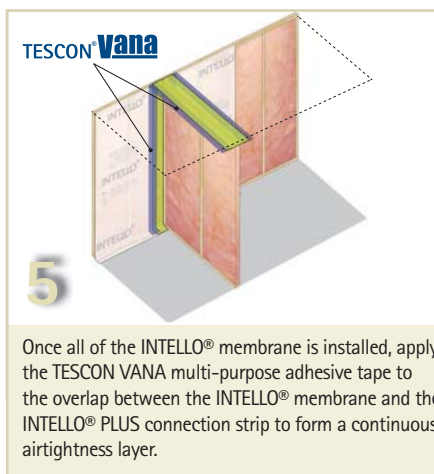
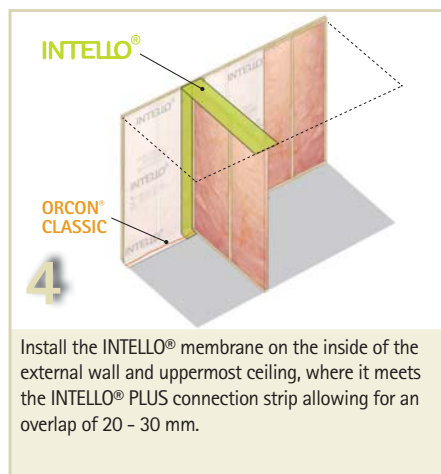
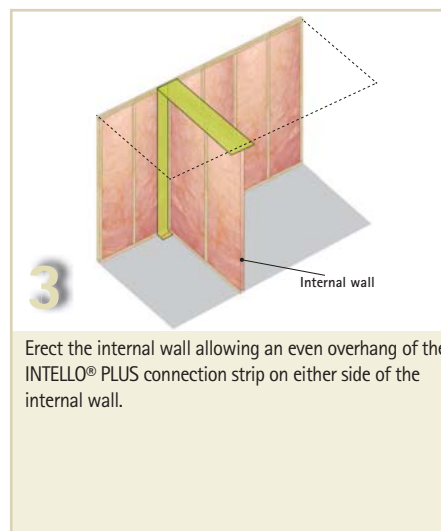
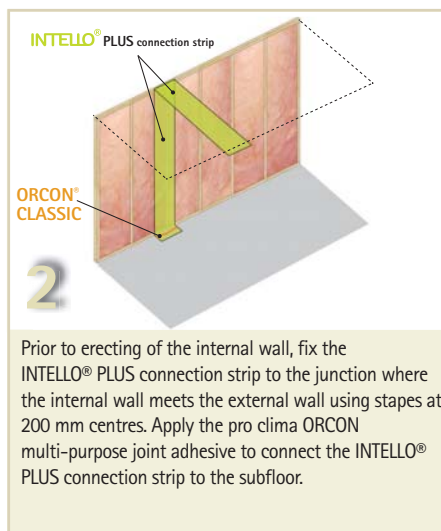
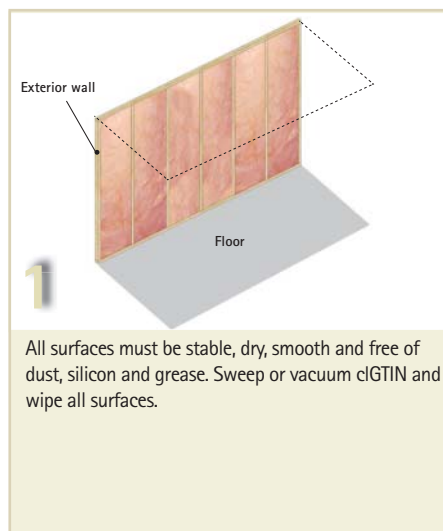
TESCON VANA; TESCON PROFIL; ORCON CLASSIC; KAFLEX; ROFLEX; INSTAABOX; DUPLEX; CONTEGA IQ

TECHNICAL DATA:

Fleece:	PP microfibre fleeces
Membrane:	polyethylene copolymer
Reinforcement:	PP
Thickness:	0.20 ±0.05 mm
MVTR-value mGTIN/humidity variable:	40 MNs/g / 1.25 > 125 MNs/g
Surface weight:	110 ±5 g/m ²
Temperature resistance:	-40 °C to +80 °C
Tensile strength MD/CD:	350 N/5 cm / 290 N/5 cm

CE certification as per DIN EN 13984.

APPLICATION



Durable bonding with pro clima Fixing Components



For durable airtightness and weathertightness systems

We provide weather and air tight bonding tapes for fixing of all internal and external surfaces and junctions. The TESCON range is a breakthrough to the Australian market using unique technology patented by pro clima. It adheres to wet and cold surfaces, is diffusion open, highly temperature resistant and easy to apply.



ADHESIVES – Fixings



ORCON[®] CLASSIC Multi-purpose liquid adhesive

APPLICATION: For connections to rough adjoining structural components or mineral surfaces.

ID Code	GTIN	ITEM	VOLUME	EFFICIENCY/RANGE	KG/PU	PU	PU/PAL	\$/Individual Unit
14899	4026639148995	cartridge	310 ml	bead 5 mm ~ 15 m bead 8 mm ~ 6 m	7.7	20	60	17.50
14900	4026639149008	sausage	600 ml	bead 5 mm ~ 30 m bead 8 mm ~ 12 m	7.7	12	60	25.50

ADVANTAGES:

Exceptionally high cohesion; elastic film; suitable for bonding of all pro clima membranes; outstanding adhesion to rough adjoining structural components or mineral surfaces

TECHNICAL DATA:

Material:	Non-ageing acrylate polymers without softeners or halogenated compounds
Installation temperature (unfrozen):	-10 °C to +50 °C
Temperature resistance:	long term -20 °C to +80 °C
Storage:	> -20 °C, cool and dry



Weathertight and durable sealing with pro clima

TESCON **EXTORA**®

Wall sealing tapes

→ For wall sarking like SOLITEX EXTASANA and other weathertightness layers

Roof sealing tapes

→ For sealing the overlapping of roof sarking like SOLITEX MENTO

- ✓ Watertight
- ✓ Can be applied to damp surfaces
- ✓ Very high adhesion on cold surfaces
- ✓ Diffusion open
- ✓ Easy to cut with a knife
- ✓ UV Stability: 90 days
- ✓ Thin and flexible
- ✓ Best performance – saving cost and time



BRANZ Appraised
Appraisal No.838 [2013]

TESCON **EXTORA**® Weathertight sealing tape

APPLICATION: Multi-purpose adhesive tape for windproof and weathertight sealing of roof underlays, wall sarking and other weathertightness layers.

ID CODE	GTIN	LENGTH	WIDTH	PU	KG/PU	PU/PAL	\$/m	\$/ROLL	\$/UNIT
13206	4026639132062	30 m	60 mm	10	6	48	1.72	51.60	516.00
13486	4026639134868	30 m	60 mm	20	big pack* 12	24	1.56	46.80	936.00
13280	4026639132802	30 m	100 mm	3	3	96	2.84	85.20	255.60
14891	4026639148919	30 m	150 mm	2	3.9	96	5.40	129.50	259.00
14892	4026639148926	30 m	200 mm	1	2.9	96	7.20	173.00	173.00

ADVANTAGES:

Waterproof from the outside; no heating up necessary; reduces the risk of condensation and mould; saves time by fast application; easy to cut; suitable for AUS climate conditions; thin and flexible; can be applied to cold and wet surfaces; highly UV stabilised

TECHNICAL DATA:

Carrier material:	special fleece based on PP
Release material:	siliconized paper
Temperature resistance:	long term -40 °C to +90 °C
Installation temperature:	from -10 °C
UV stability and outdoor exposure:	90 days
Colour:	black
Storage:	cool and dry



BRANZ Appraised
Appraisal No.838 [2013]

TESCON **EXTORA**® **PROFIL** Weathertight corner sealing tape

APPLICATION: TESCOX PROFIL for a secure and permanent weathertight connection between SOLITEX membranes and windows or doors.

ID CODE	GTIN	LENGTH	WIDTH	PU	KG/PU	PU/PAL	\$/m	\$/ROLL	\$/UNIT
15050	4026639150509	30 m	60 mm	5	6	48	2.10	63.00	315.00
15236	4026639152367	30 m	60 mm	20	12	24	2.00	60.00	1200.00 big pack*

ADVANTAGES:

Split release paper for corner of window/door installations; waterproof from the outside; no heating up necessary; reduces the risk of condensation and mould; saves time by fast application; suitable for AUS climate conditions; thin and flexible; can be applied to cold and wet surfaces; highly UV stabilised

TECHNICAL DATA:

Carrier material:	special fleece based on PP
Release material:	siliconized paper
Temperature resistance:	long term -40 °C to +90 °C
Installation temperature:	from -20 °C
Colour:	black
Storage:	cool and dry
UV stability and outdoor exposure:	90 days

*big pack product only sold per unit.



TESCOX **EXTOSIL**® Sill Tape

APPLICATION: For wall sarking like SOLITEX EXTASANA and other weathertightness layers.

ID CODE	GTIN	LENGTH	WIDTH	PU	KG/PU	PU/PAL	\$/m	\$/ROLL	\$/UNIT
14152	4026639141521	20 m	150 mm	2	5	120	6.20	124.00	248.00
14156	4026639141569	20 m	200 mm	2	6.6	84	8.30	166.00	332.00

ADVANTAGES:

One piece stretchable Sill tape; no need for corner moulds; can be applied to damp surfaces; very high adhesion on cold surfaces; no heating necessary; highly UV stabilised; suitable for AUS climate conditions; best performance; saving cost and time

TECHNICAL DATA:

Carrier material	butyl rubber with PE film
Release material:	siliconized foil in individual strips: 90 / 60 (150mm) 140 / 60 (200mm)
Temperature resistance:	long term -30 °C to +90 °C
Installation temperature:	from -20 °C
Thickness:	1.00 mm
Colour:	black
Storage:	cool and dry
UV stability and outdoor exposure:	90 days

APPLICATION

Pre-installation measurement



Measure vertically up the jamb from the internal corner of the sill. Minimum 100 mm allowing for 50 mm cover onto the wall underlay.

Cut Sill Tape to length



Cut TESCOX EXTOSIL to appropriate length (sill length plus required jamb height on either side).

Installation to framing



Remove first release foil to allow for application onto sill and jamb framing. Start installing the Sill Tape from the first pre-installation measurement of the first jamb. Follow the sill and up the second jamb. Ensure you apply the Sill Tape tightly into the corner and smoothly along the sill frame using the pro clima PRESSFIX.

Installation to weathertightness layer



Remove second release foil to allow for application onto weathertightness layer. Fold and stretch to the face of the weathertightness layer. Ensure you apply the Sill Tape smoothly using the pro clima PRESSFIX.

Jamb / Head installation



Measure vertically down the jamb and horizontally across the head trimmer from the internal corner. Minimum 100 mm allowing for 50 mm cover onto the weathertightness layer. Repeat installation to jamb and head trimmer as per steps 3 and 4.



TESCON® **NAiDEC** Double sided butyl rubber tape

APPLICATION: As nail sealing tape on the underside of a purlin / batten on roofs to form a durable seal around nail or screw penetrations.

ID CODE	GTIN	LENGTH	WIDTH	PU	KG/PU	PU/PAL	\$/m	\$/ROLL	\$/UNIT
13599	4026639135995	20 m	50 mm	6	8.5	96	1.96	39.20	235.20
13600	4026639136008	20 m	50 mm	24 <small>big pack*</small>	33	24	1.72	34.40	825.60

ADVANTAGES:

Water resistant; suitable for temporary weathertightening of the roof together with the pro clima roof sarking without installation of the roof cladding to allow for continuous work within the building; extra-strong due to a reinforcing layer; contains no bitumen

TECHNICAL DATA:

Carrier material:	butyl rubber with PE film
Release material:	siliconized paper
Temperature resistance:	long term -20 °C to +80 °C
Installation temperature:	+5 °C to +35 °C
Thickness:	1.00 mm
Colour:	black
Storage:	cool and dry

*big pack product only sold per unit.



CONTEGA® **IQ** Window and door connection strips

APPLICATION: CONTEGA IQ is used for an airtight or weathertight connection to windows and door frames to the airtightness layer, wall underlay or other weathertightness layer.

PRODUCT	ID CODE	GTIN	LENGTH	WIDTH	PU	KG/PU	PU/PAL	\$/m	\$/ROLL
1 self-adhesive strip (For masonry construction)	14897	4026639148971	30 m	90 mm	8	5.5	30	4.75	142.50
2 self-adhesive strip (For timber frame construction)	14896	4026639148964	30 m	90 mm	8	7	30	5.45	163.50

ADVANTAGES:

Weathertight window and door installation in accordance with DIN 4108-7, SIA 180 and OENORM B8110-2; diffusion open, watertight connection; extremely flexible and durable connection strip

TECHNICAL DATA:

Carrier material:	PP microfibre fleeces
Temperature resistance:	from -40 °C to +90 °C
Installation temperature:	over -10 °C
Storage:	cool and dry





TESCON® **Vana** Multi-purpose adhesive tape

APPLICATION: TESCON VANA for a secure and permanent airtight seal of overlaps between INTELLO® membranes, joints between membranes and smooth, non-mineral surfaces. Also suitable for sealing joints between wood-based panels.

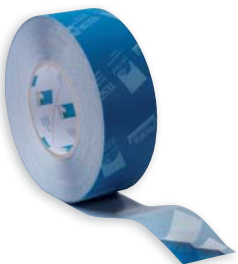
ID CODE	GTIN	LENGTH	WIDTH	PU	KG/PU	PU/PAL	\$/m	\$/ROLL	\$/UNIT
12185	4026639121851	30 m	60 mm	10	7.4	48	1.72	51.60	516.00
11365	4026639113658	30 m	60 mm	20 <small>big pack*</small>	14.5	24	1.56	46.80	936.00

ADVANTAGES:

Durable airtight sealing inside; can also be used for penetrations of the INTELLO®; diffusion open; for airtight sealing in accordance with DIN 4108, SIA 180 and OENORM B8110-2; thin and flexible; can be applied to cold surfaces

TECHNICAL DATA:

Carrier material:	special fleece made from PP
Release material:	siliconized paper
Temperature resistance:	long term -40 °C to +90 °C
Installation temperature:	from -10 °C
UV stability and outdoor exposure:	indoor use only
Colour:	dark blue
Storage:	cool and dry



TESCON® **PROFIL** Corner sealing tape

APPLICATION: TESCON PROFIL for a secure and permanent airtight seal of junctions between INTELLO® membranes and windows or doors.

ID CODE	GTIN	LENGTH	WIDTH	PU	KG/PU	PU/PAL	\$/m	\$/ROLL	\$/UNIT
12186	4026639121868	30 m	60 mm	5	3.5	96	2.10	63.00	315.00
11398	4026639113986	30 m	60 mm	20 <small>big pack*</small>	13.8	24	2.00	60.00	1200.00

ADVANTAGES:

Release paper may be removed in either 3 or 2 individual strips; durable airtight sealing inside; can also be used for penetrations of the INTELLO®; diffusion open; for airtight sealing in accordance with DIN 4108, SIA 180 and OENORM B8110-2; thin and flexible; can be applied to cold surfaces

TECHNICAL DATA:

Carrier material:	special fleece made from PP
Release material:	siliconized paper in individual strips: 12 / 23 / 25 mm
Temperature resistance:	long term from -40 °C to +90 °C
Installation temperature:	over -10 °C
UV stability and outdoor exposure:	indoor use only
Colour:	dark blue
Storage:	cool and dry



DUPLEX Double sided tape

APPLICATION: Double sided adhesive tape for bonding the overlaps of membranes. Also suitable for affixing membranes to steel frame structures.

ID CODE	GTIN	LENGTH	WIDTH	PU	KG/PU	PU/PAL	\$/ROLL	\$/UNIT
13602	4026639136022	20 m	25 mm	5	0.9	378	15.84	79.20

ADVANTAGES: Double sided sealing tape for the overlap of internal and external membranes; for fixing of membranes to steel frame structures; thin and flexible; can be applied to cold surfaces

TECHNICAL DATA:

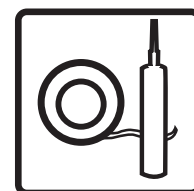
Carrier paper:	PP reinforcement
Release material:	siliconized paper
Temperature resistance:	long term from -40 °C to +90 °C
Application temperature:	over -10 °C
UV stability and outdoor exposure:	indoor and outdoor use without direct UV exposure
Colour:	clear
Storage:	cool and dry

*big pack product only sold per unit.

Prices in AUD and exclude GST. Price valid from 01.09.2015. All previous price lists are invalid. Non-binding offer. Terms and conditions apply. Errors excepted. For volume discounts please refer to your pro clima discount structure.

Durable bonding with pro clima Fixing detail solutions

For durable airtightness and weathertightness systems



GROMMETS AND DETAIL SOLUTIONS – Fixings

All grommets and detail solutions products only available by unit



INSTAABOX Installation box

APPLICATION: This box allows for airtight installation of light switches and power plugs for wall systems without service cavity.

ID CODE	GTIN	PU	KG/PU	\$/PCS	\$/PU
12181	4026639121813	5	0.13	8.40	42.00
13601	4026639136015	20 <small>big pack*</small>	0.52	7.50	150.00

ADVANTAGES:

Complies with the requirements of DIN 4108-7, SIA 180 and OENORM B8110-2 with regard to airtightness for the use of standard flush boxes; for up to three flush boxes; pre-pressed exit points for cables; for cables up to 20 mm in diameter

TECHNICAL DATA:

Material:	polyethylene, flexible and extensible
Temperature resistance:	-10 °C to +80 °C
Cable diameter:	max. 20 mm
Depth:	55 mm
Length / width installation space/ cavern:	260 mm / 130 mm
Length / width over all:	320 mm / 190 mm



*big pack product only sold per unit.

Prices in AUD and exclude GST. Price valid from 01.09.2015. All previous price lists are invalid. Non-binding offer. Terms and conditions apply. Errors excepted. For volume discounts please refer to your pro clima discount structure.



KAFLEX mono/duo

Sealing grommets for 1 cable, Ø 6–12 mm

Sealing grommets for 2 cables, Ø 6–12 mm

APPLICATION: Sealing grommet made of strong and highly flexible EPDM. Ideally suited for rapid and permanent airtight sealing of penetrations of cables and pipes through the airtightness layer. Can also be used outdoors, i.e. for roof and wall sarking.

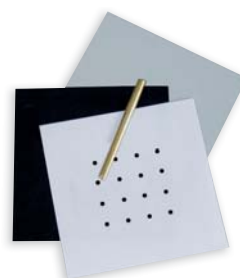
PRODUCT	ID CODE	GTIN	LENGTH	WIDTH	PU	KG/PU	\$/PCS	\$/PU
KAFLEX mono	13628	4026639136282	145 mm	145 mm	5	0.15	7.20	36.00
KAFLEX mono	13629	4026639136299	145 mm	145 mm	30 <small>big pack*</small>	0.5	5.50	164.00
KAFLEX duo	13633	4026639136336	145 mm	145 mm	5	0.15	7.20	36.00
KAFLEX duo	13631	4026639136312	145 mm	145 mm	30 <small>big pack*</small>	0.5	5.50	164.00

ADVANTAGES:

High-quality EPDM, extremely flexible and elastic; cables and pipes can be still be pulled or pushed without damaging the airtightness layer; quick and secure sealing; also suitable for penetrations of roof and wall sarking

TECHNICAL DATA:

Material:	special reinforced paper with EPDM
Temperature resistance:	-40 °C to +150 °C (EPDM)
Installation temperature:	over -10 °C
Storage:	cool and dry



KAFLEX multi

Multiple cable grommet for up to 16 cables, Ø 6–12 mm

APPLICATION: Cable grommet made from strong and highly flexible EPDM for simple, rapid and permanent sealing of penetrations for up to 16 cables through the airtightness layer or roof and wall sarking.

ID CODE	GTIN	LENGTH	WIDTH	PU	KG/PU	\$/PCS	\$/PU
13630	4026639136305	140 mm	140 mm	2	0.22	26.00	52.00
13634	4026639136343	140 mm	140 mm	20 <small>big pack*</small>	1	16.60	392.00

ADVANTAGES:

Complete set for up to 16 cables; quick and secure sealing; indoors or outdoors; extremely flexible and elastic; efficient and quick installation; also suitable for penetrations of roof and wall sarking

TECHNICAL DATA:

Material:	EPDM
Temperature resistance:	from -40 °C to +120 °C
Installation temperature:	over -10 °C
Storage:	cool and dry



KAFLEX post

Sealing patch for already installed cables

APPLICATION: KAFLEX post can be used to provide a durable seal to an installed cable that is already connected. Can be used in combination with internal and external membranes.

ID CODE	GTIN	LENGTH	WIDTH	PU	KG/PU	\$/PCS	\$/PU
13635	4026639136350	140 mm	140 mm	5	0.15	8.50	42.50
13636	4026639136367	140 mm	140 mm	20 <small>big pack*</small>	0.3	6.40	128.00

ADVANTAGES:

Durable sealing of installed and connected cables; diffusion open; for airtight sealing in accordance with DIN 4108, SIA 180 and OENORM B8110-2; thin and flexible; can be applied to cold and wet surfaces

TECHNICAL DATA:

Material:	special fleece made from PP
Release paper:	siliconized paper
Temperature resistance:	long term -40 °C to +90 °C
Application temperature:	from -10 °C

*big pack product only sold per unit.

Prices in AUD and exclude GST. Price valid from 01.09.2015. All previous price lists are invalid. Non-binding offer. Terms and conditions apply. Errors excepted. For volume discounts please refer to your pro clima discount structure.



ROFLEX 20 Sealing grommets for pipes, Ø 15–30 mm

APPLICATION: Sealing grommet made of strong and highly flexible EPDM. Ideally suited for rapid and permanent airtight sealing of penetrations of cables and pipes through the airtightness layer. Can also be used outdoors, i.e. for roof and wall sarking.

ID CODE	GTIN	LENGTH	WIDTH	PU	KG/PU	\$/PCS	\$/PU
13605	4026639136053	145 mm	145 mm	5	0.1	8.40	42.00
13606	4026639136060	145 mm	145 mm	30 big pack*	0.4	6.10	183.00

ADVANTAGES:

High-quality EPDM, extremely flexible and elastic; cables and pipes can be still be pulled or pushed without damaging the airtightness; secure bond, quick and secure sealing; also suitable for penetrations of roof and wall sarking

TECHNICAL DATA:

Material:	special reinforced paper with EPDM
Temperature resistance:	-40 °C to +120 °C (EPDM)
Installation temperature:	over -10 °C
Storage:	cool and dry



ROFLEX 20 multi Multi conduit grommet for up to 9 conduits

APPLICATION: Conduit grommet made of strong and highly flexible EPDM for simple, rapid and permanent airtight feed-throughs of up to 9 pipes through the airtight sealing layer or under the roof.

ID CODE	GTIN	LENGTH	WIDTH	PU	KG/PU	\$/PCS	\$/PU
12936	4026639129369	200 mm	200 mm	2	0.22	38.90	77.80

ADVANTAGES:

Complete set for up to 9 pipes; secure bond, quick and secure sealing, indoors or out; high-quality EPDM, extremely flexible and elastic, no excess bushing; waterproof, also suitable for penetrations in façades and roof linings; pipes and cables can be still be pulled or pushed

TECHNICAL DATA:

Material:	EPDM
Temperature resistance:	from -40 °C to +150 °C
Installation temperature:	from -10 °C
Storage:	cool and dry



ROFLEX 50 / 100 / 150 / 200 / 250 / 300 Sealing grommets for pipes

APPLICATION: Sealing grommet made of strong and highly flexible EPDM. Ideally suited for rapid and permanent airtight sealing of cable and pipe penetrations through the airtightness layer. Can also be used outdoors, i.e. for roof and wall sarking by applying the waterproof TESCON EXTORA adhesive tape over grommets.

ID CODE	GTIN	LENGTH	WIDTH	FOR DIAMETER	PU	KG/PU	\$/PCS	\$/PU
13608	4026639136084	140 mm	140 mm	Ø 50–90 mm	2 ROFLEX 50	0.1	12.00	24.00
13609	4026639136091	140 mm	140 mm	Ø 50–90 mm	20 ROFLEX 50 big pack*	0.4	7.75	155.00
13610	4026639136107	200 mm	200 mm	Ø 100–120 mm	2 ROFLEX 100	0.22	14.00	28.00
13613	4026639136138	200 mm	200 mm	Ø 100–120 mm	20 ROFLEX 100 big pack*	1	9.30	186.00
13614	4026639136145	250 mm	250 mm	Ø 120–170 mm	2 ROFLEX 150	0.28	19.00	38.00
13612	4026639136121	250 mm	250 mm	Ø 120–170 mm	20 ROFLEX 150 big pack*	1.8	12.00	240.00
13615	4026639136152	300 mm	300 mm	Ø 170–220 mm	2 ROFLEX 200	0.4	23.00	46.00
13616	4026639136169	300 mm	300 mm	Ø 170–220 mm	20 ROFLEX 200 big pack*	2	15.00	300.00
13617	4026639136176	450 mm	450 mm	Ø 220–270 mm	2 ROFLEX 250	0.7	34.00	68.00
13618	4026639136183	500 mm	500 mm	Ø 270–320 mm	2 ROFLEX 300	0.8	42.00	84.00

ADVANTAGES:

High-quality EPDM, extremely flexible and elastic; cables and pipes can be still be pulled or pushed without damaging the airtightness layer; quick and secure sealing; also suitable for penetrations of roof and wall sarking

TECHNICAL DATA:

Material:	EPDM
Temperature resistance:	from -40 °C to +150 °C
Installation temperature:	over -10 °C
Storage:	cool and dry

*big pack product only sold per unit.

Prices in AUD and exclude GST. Price valid from 01.09.2015. All previous price lists are invalid. Non-binding offer. Terms and conditions apply. Errors excepted. For volume discounts please refer to your pro clima discount structure.

Airtightness is measurable!

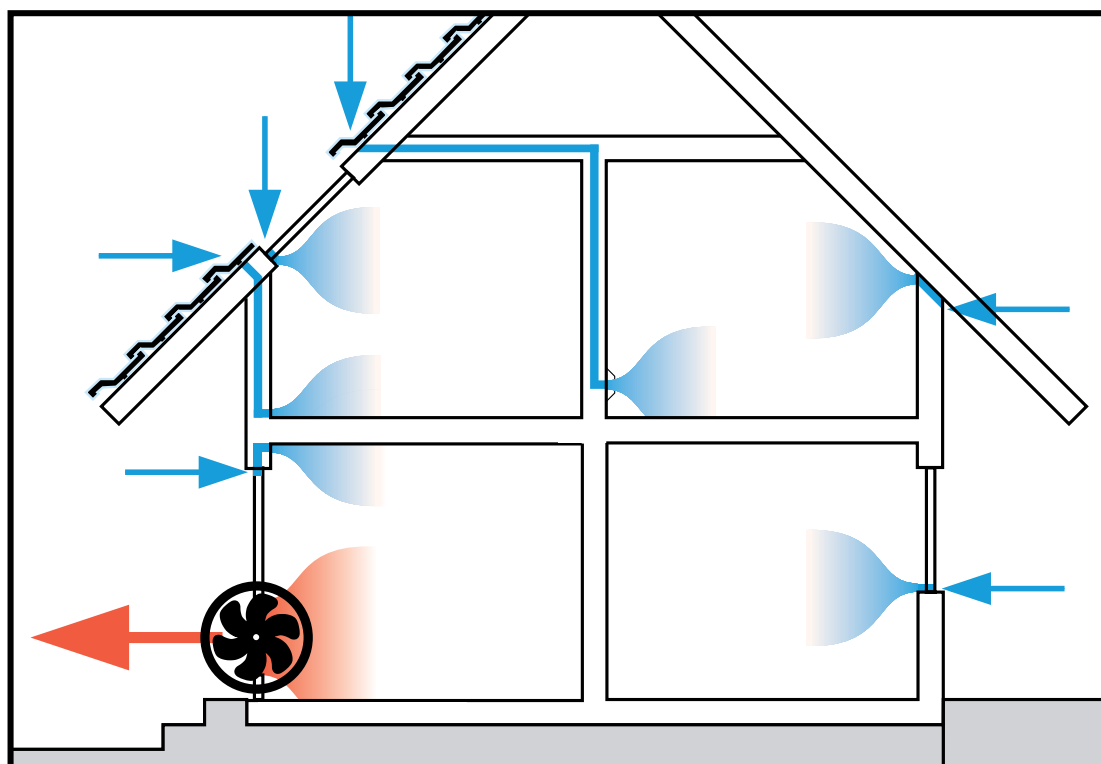


WINCON – verification of installation

Verification of the installation of the Intelligent Airtightness System (IAS) is undertaken by using the pro clima WINCON. The simple and easy WINCON test allows air leakage to be identified by depressurising the building.

Blower Door – measuring building performance

A Blower Door is a diagnostic tool which helps locate air leakage within the building envelope. Measurements are performed in pressurised or depressurised buildings, where climatic or other external influences are minimized due to the high pressure difference created by the fan. This allows for a reliable measurement of infiltration rates.



Blower Door Hardware and Software

ID Code	15394
GTIN	4026639153944
PU	1
\$/PU	8099.00

TECHNICAL DATA:

Frame dimensions:	Width 0.71 – 1.14 m Length 1.32 – 2.43 m
Power source:	230 V / 50 Hz
Maximum airflow volume:	Up to 7,200 m ³ /h
Features:	With aluminum frame, DG-700 digital pressure and flow gauge and software TECTITE Express
Warranty:	1 year



WINCON Installation verification unit

ID Code	13639
GTIN	4026639136398
PU	1
\$/PU	3650.00

TECHNICAL DATA:

Frame dimensions:	810 x 810 mm
Power source:	230 V / 50 Hz / 4.35 A
Maximum airflow volume:	11,000 m³/h; 9,600 m³/h at 50 Pa
Features:	Differential pressure indicator, speed controller, 5 m power cord
Warranty:	2 years



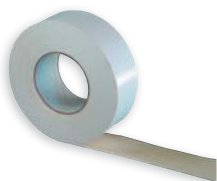
WINCON Transport box

Robust and practical transport box with carry handles.

ID Code	13640
GTIN	4026639136404
PU	1
\$/PU	560.00

TECHNICAL DATA:

Material:	Plywood
Dimensions:	H/860 x B/420 x T/850 mm



WINCON Tape

For temporary sealing of the WINCON to the construction. Tape can easily be removed after testing without causing any damage.

ID Code	13641
GTIN	4026639136411
PU	1
\$/PU	18.90

TECHNICAL DATA:

Roll:	50 mm width / 50 m length
-------	---------------------------



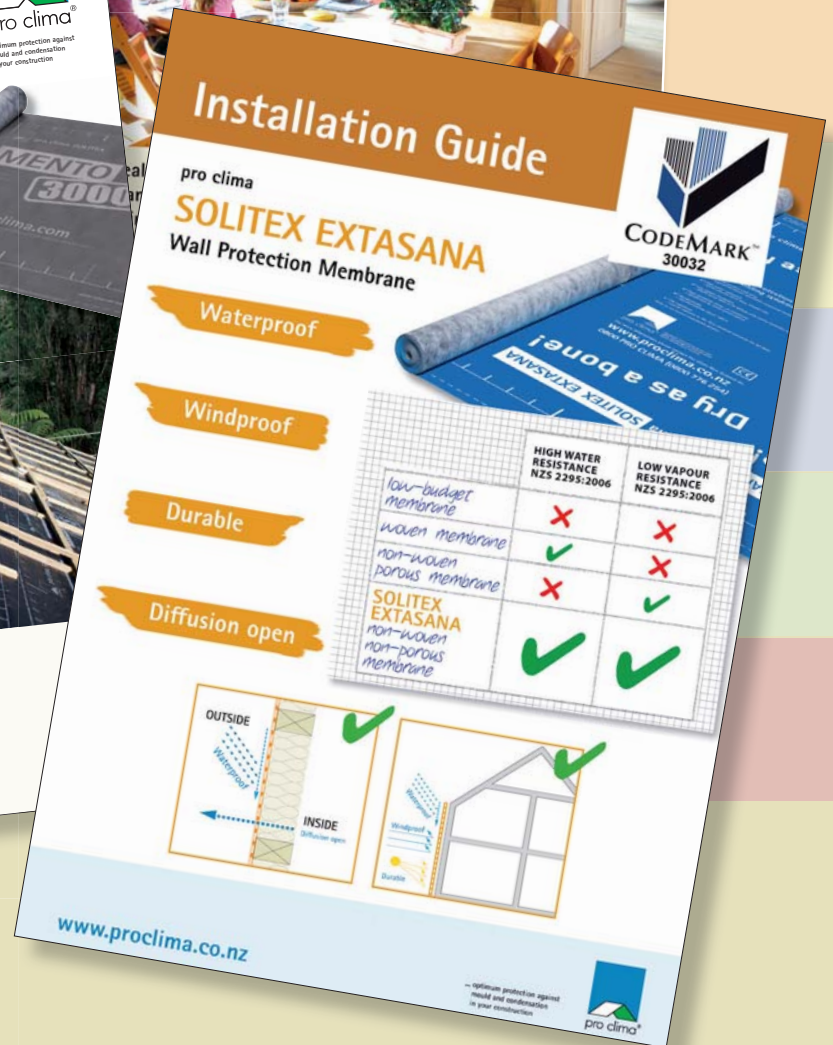
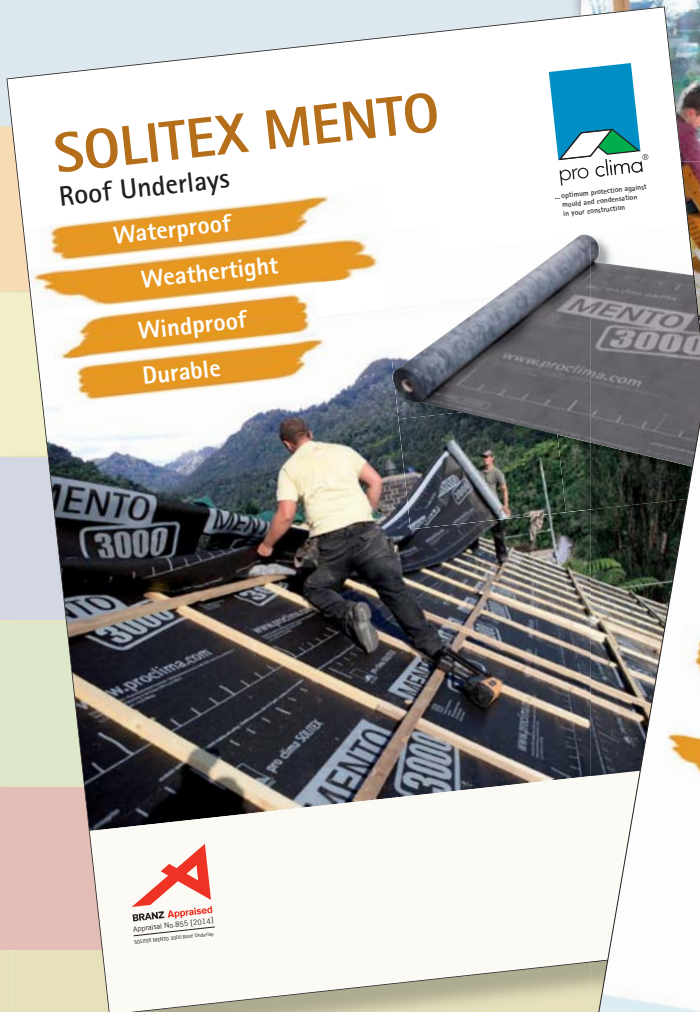
Draeger smoke stick kit CH 216

10 tubes to visualise air movement, rubber bulb, 4 rubber caps

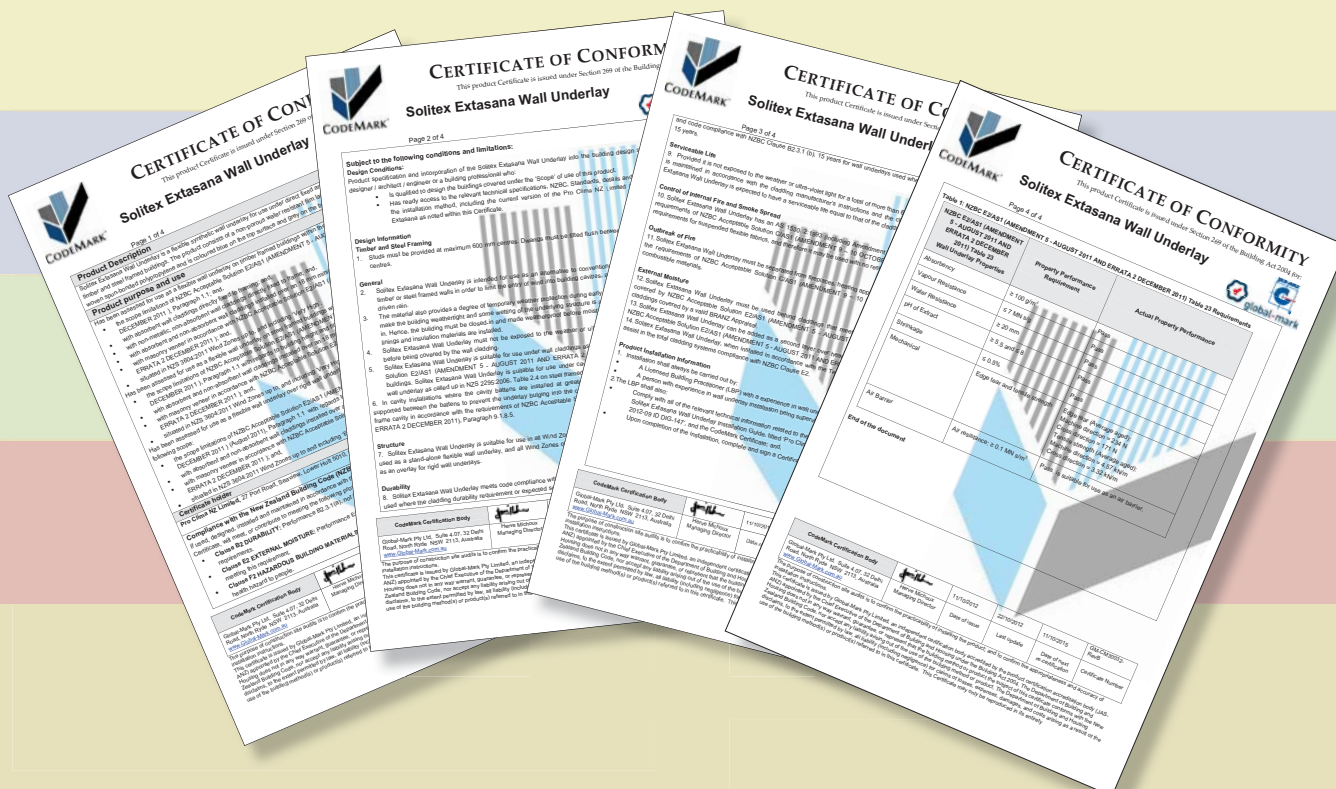
ID Code	13642
GTIN	4026639136428
PU	1
\$/PU	140.00

KNOWLEDGE

- Seminars
- Workshops
- Technical Support



www.proclima.com.au



... our knowledge creates solutions for you



2015-09 M15414

Pro Clima Australia Pty Ltd

PO Box 924
Gosford
NSW 2250
Australia

Phone: 1800 PRO CLIMA (776 254)

Web: www.proclima.com.au

Email: welcome@proclima.com.au

